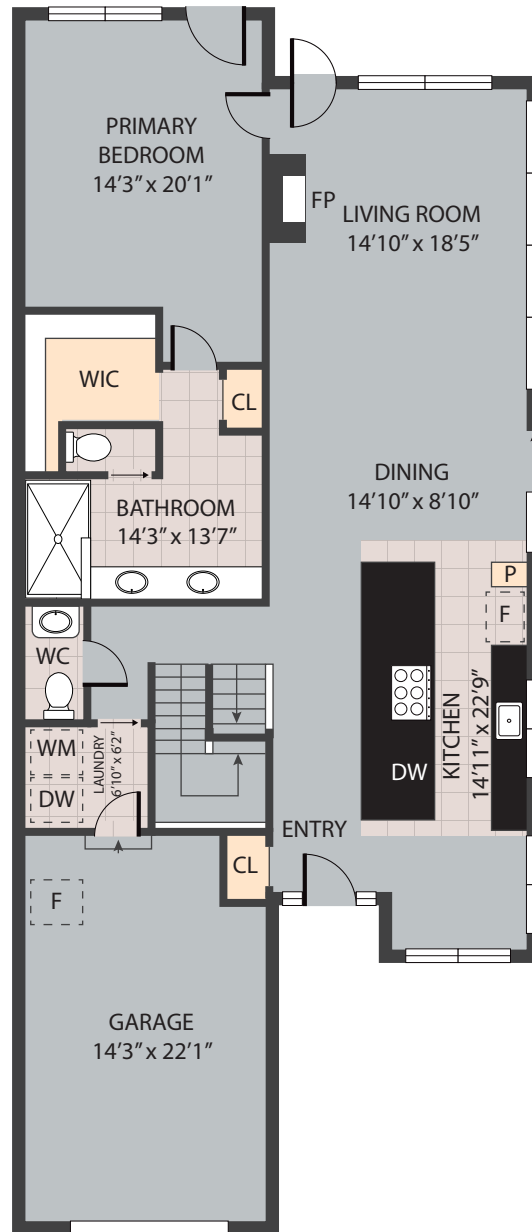
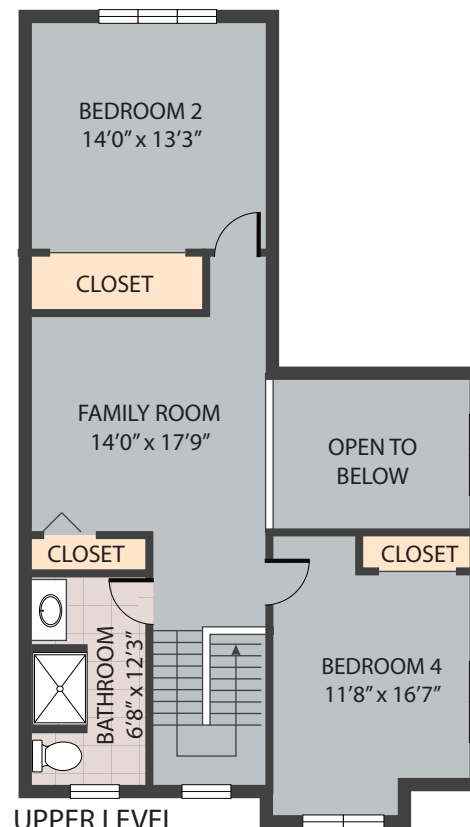


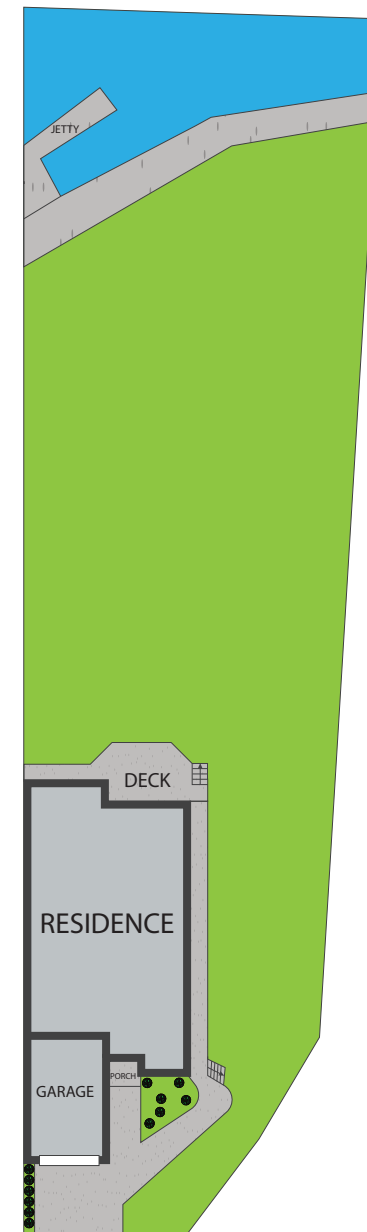
LOWER LEVEL



MAIN LEVEL



UPPER LEVEL



4591 Mallard Point Way, Dublin 24084

TOTAL APPROX. FLOOR FINISHED AREA 3,924 SQ.FT

Whilst every attempt has been made to ensure the accuracy of the floor plan contained here, measurements of doors, windows, rooms and any other items are approximate and no responsibility is taken for any error, omission, or misstatement. This plan is for illustrative purposes only and should be used as such by any prospective purchaser.

LOWER LEVEL	:	1,237 SQ.FT
MAIN LEVEL	:	1,608 SQ.FT
UPPER LEVEL	:	1,079 SQ.FT
TOTAL FINISHED AREA	:	3,924 SQ.FT
STORAGE	:	181 SQ.FT
GARAGE	:	375 SQ.FT
TOTAL UNFINISHED AREA	:	556 SQ.FT